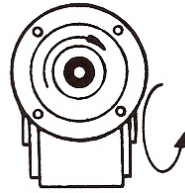
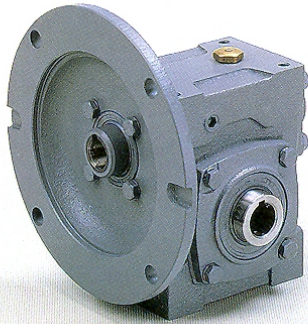
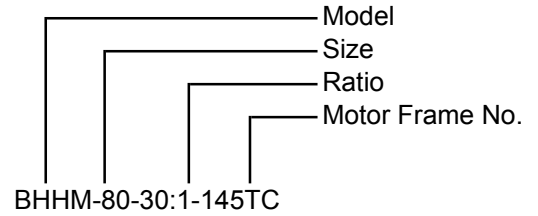


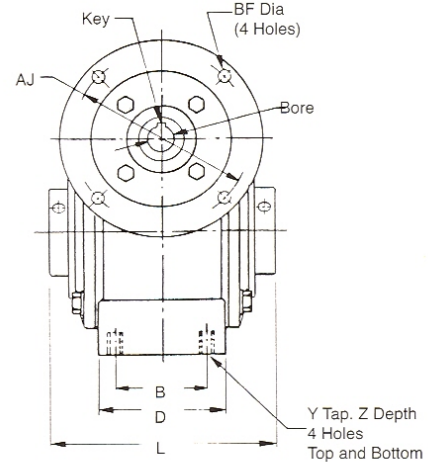
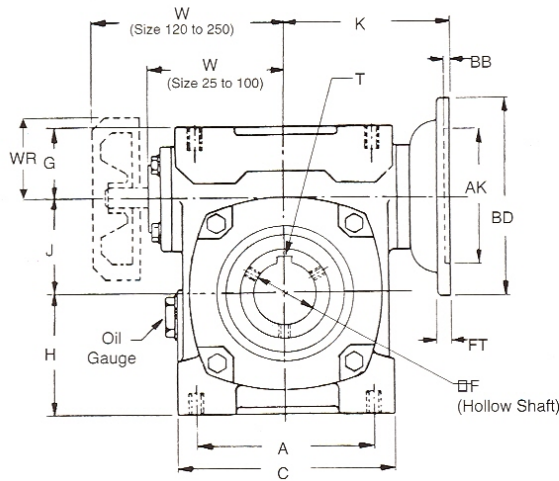
# Shaft Mounting BHMM Model Reducer Dimensions



## HOW TO ORDER



NEMA Frame No.	Bore	AJ	AK	BD	BF	BB	FT	Key
42CZ	1/2	3.75	3.00	4.63	.31	.16	.28	1/8
56C	5/8	5.88	4.50	6.50	.44	.16	.31	3/16
143TC/145TC	7/8	5.88	4.50	6.50	.44	.16	.31	3/16
182TC/184TC	1-1/8	7.25	8.50	9.00	.53	.19	.38	1/4
213TC/215TC	1-3/8	7.25	8.50	9.00	.53	.19	.38	5/16
254TC/256TC	1-5/8	7.25	8.50	9.00	.53	.19	.38	3/8



## DIMENSIONS IN INCHES

Size	A	B	C	D	G	H	J	K	L	W	WR	Y	Z	Low Speed Shaft		STOCK NEMA FLANGE
														F	T	
34	2.76	1.93	3.43	2.44	1.22	1.65	1.33	3.23	4.25	2.44		1/4-20	7/16	3/4	3/16x3/32	42CZ,56C
40	3.15	2.13	3.90	2.68	1.34	2.09	1.57	3.41	4.50	2.64		5/16-18	5/8	3/4	3/16x3/32	56C
45	4.19	2.75	4.82	3.35	1.94	2.06	1.75	3.92	4.50	2.95		5/16-18	5/8	1	1/4x1/8	56C
50	3.54	1.97	4.49	2.68	1.38	2.56	1.97	3.33	5.00	2.97		5/16-18	5/8	1	1/4x1/8	56C,140TC
60	3.94	2.13	4.96	3.11	1.65	2.95	2.36	4.00	5.38	3.27		3/8-16	3/4	1	1/4x1/8	56C,140TC
70	4.92	2.60	5.98	3.46	1.97	3.35	2.76	4.53	5.88	3.80		3/8-16	3/4	1-3/16	1/4x1/8	56C,140TC,180TC
80	5.71	2.95	6.69	3.98	2.36	3.62	3.15	4.92	6.50	4.27		3/8-16	3/4	1-1/2	5/16x5/32	56C,140TC,180TC
100	7.28	3.35	8.82	4.49	2.95	4.53	3.94	5.93	7.25	5.34		1/2-13	15/16	2	3/8x3/16	56C,140TC,180TC
120	8.86	3.94	10.24	5.31	3.15	5.51	4.72	6.97	8.25	8.90	3.80	1/2-13	15/16	2-3/8	5/8x5/16	180TC,210TC
135	10.24	3.94	11.81	5.51	3.35	6.50	5.31	8.66	9.25	9.80	3.80	5/8-11	1-1/8	2-3/4	5/8x5/16	180TC,210TC
155	11.81	4.33	13.78	6.10	4.06	7.99	6.10	9.65	11.75	11.50	4.70	5/8-11	1-1/8	3-1/4	3/4x3/8	180TC,210TC,250TC
175	13.00	4.33	15.35	6.22	4.84	8.78	6.89	12.01	12.00	12.30	4.70	3/4-10	1-3/8	3-1/2	7/8x7/16	180TC,210TC,250TC
200	14.17	5.91	16.54	7.87	5.12	9.65	7.87	12.80	14.50	13.50	5.50	3/4-10	1-3/8	4-1/8	1x1/2	210TC,250TC
225	15.75	6.30	18.50	8.66	5.71	10.83	8.86	13.78	15.25	14.50	5.50	1-8	1-3/4	4-1/2	1x1/2	210TC,250TC
250	17.72	6.69	20.47	9.06	5.91	11.81	9.84	14.96	16.25	17.00	6.65	1-8	1-3/4	5	1-1/4x5/8	210TC,250TC