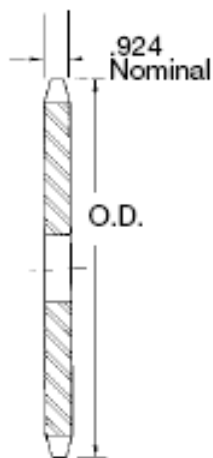


All Steel Sprockets

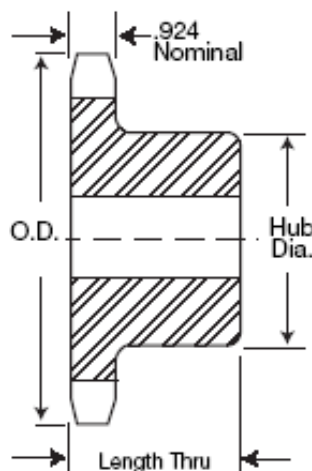


No. 140

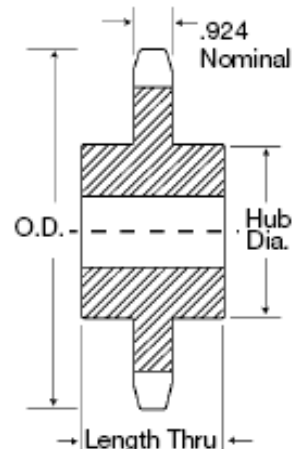
1-3/4" Pitch - Stock Bore



Type A



Type B



Type C

No. Teeth	Part Number	Outside Diameter	Type	Bore (Inches)		Hub (Inches)		Weight Lbs. (Approx.)	Type	Part Number	Stock Bore	Weight Lbs. (Approx.)
				Stock	Rec. Max.	Diameter	Length Thru					
11	140B11	7.010	B	1-1/2	2-3/4	4-1/4	2-1/4	11.3	A	140A11	1-1/2	5
12	140B12	7.580	B	1-1/2	3	4-1/2	2-1/4	13.2	A	140A12	1-1/2	7.8
13	140B13	8.150	B	1-1/2	3-9/16	5-5/16	2-3/8	18.9	A	140A13	1-1/2	8.2
14	140B14	8.720	B	1-1/2	3-3/4	5-1/2	2-3/8	20.4	A	140A14	1-1/2	10.0
15	140B15	9.280	B	1-1/2	4-1/4	6-1/4	2-3/8	25.1	A	140A15	1-1/2	11.0
16	140B16	9.850	B	1-1/2	4-1/4	6-1/4	2-1/2	27.9	A	140A16	1-1/2	14.0
17	140B17	10.410	B	1-1/2	4-1/4	6-1/4	2-1/2	29.8	A	140A17	1-1/2	16.0
18	140B18	10.980	B	1-1/2	4-1/4	6-1/4	2-1/2	32.0	A	140A18	1-1/2	18.0
19	140B19	11.540	B	1-1/2	4-1/4	6-1/4	2-1/2	34.1	A	140A19	1-1/2	21.0
20	140B20	12.100	B	1-1/2	4-1/4	6-1/4	2-1/2	36.0	A	140A20	1-1/2	23.0
21	140B21	12.660	B	1-1/2	4-1/4	6-1/4	2-1/2	38.7	A	140A21	1-1/2	25.0
22	140B22	13.220	B	1-1/2	4-1/4	6-1/4	2-1/2	40.6	A	140A22	1-1/2	28.0
23	140B23	13.780	B	1-1/2	4-1/4	6-1/4	2-1/2	42.1	A	140A23	1-1/2	30.0
24	140B24	14.340	B	1-1/2	4-1/4	6-1/4	2-1/2	46.2	A	140A24	1-1/2	33.0
25	140B25	14.900	B	1-1/2	4-1/4	6-1/4	2-1/2	47.8	A	140A25	1-1/2	34.0
26	140B26	15.460	B	1-1/2	4-1/4	6-1/4	3	57.2	A	140A26	1-1/2	39.0
27	140B27	16.020	B	1-1/2	4-1/4	6-1/4	3	58.5	A	140A27	1-1/2	41.0
28	140B28	16.580	B	1-1/2	4-1/4	6-1/4	3	62.2	A	140A28	1-1/2	45.0
30	140B30	17.700	B	1-1/2	4-1/4	6-1/4	3	69.8	A	140A30	1-1/2	52.0
31		18.260							A	140A31	1-1/2	56.0
32	140B32	18.820	B	1-1/2	4-1/4	6-1/4	3	76.3	A	140A32	1-1/2	60.0
35	140C35	20.490	C	1-1/2	5-1/4	7	4	108	A	140A35	1-1/2	73.0
36		21.050							A	140A36	1-1/2	77.0
40	140C40	23.290	C	1-1/2	5-1/4	7	4	121	A	140A40	1-1/2	93.0
45	140C45	26.080	C	1-1/2	5-1/4	7	4	142	A	140A45	1-1/2	131
48	140C48	27.750	C	1-1/2	5-1/4	7	4	150	A	140A48	1-1/2	134
54	140C54	31.100	C	1-1/2	5-1/4	7	4	177	A	140A54	1-1/2	173
60	140C60	34.440	C	1-1/2	5-1/4	7	5	220	A	140A60	1-1/2	219
70	140C70	40.020	C	1-1/2	5-3/8	7-1/2	5	282	A	140A70	1-1/2	292
80	140C80	45.590	C	1-1/2	5-3/8	7-1/2	5	331	A	140A80	1-1/2	402

* Has recessed groove in hub for chain clearance.

Maximum bore shown will accommodate standard keyseat and setscrew over keyseat. Slightly larger bores are possible with no keyseat, shallow keyseat, or setscrew at angle to keyseat.